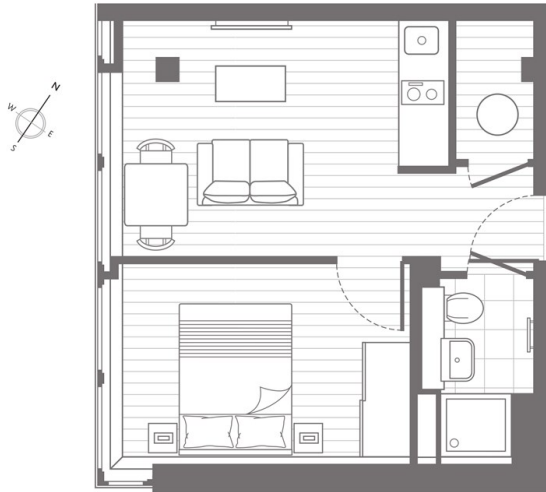




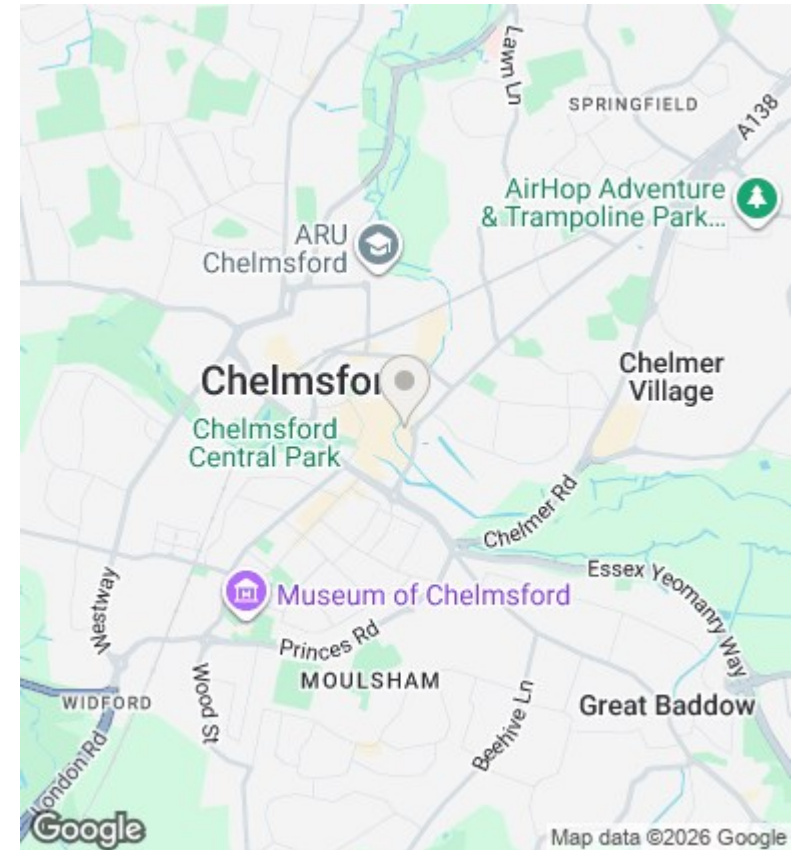
Flat 38, Rosebery House, 41 Springfield Road, Chelmsford, CM2 6ZP

£1,050 PCM

- CITY CENTRE
- MODERN THROUGHOUT
- FITTED KITCHEN
- AVAILABLE NOW
- FULLY FURNISHED



Total area: 30.7 sq.m. 331 sq.ft



Directions

Viewings

Viewings by arrangement only. Call 01376 337400 to make an appointment.

Council Tax Band

B

EPC Rating:

C

Energy Efficiency Rating		Current	Potential
<i>Very energy efficient - lower running costs</i>			
(92 plus) A			
(81-91) B			
(69-80) C		79	79
(55-68) D			
(39-54) E			
(21-38) F			
(1-20) G			
<i>Not energy efficient - higher running costs</i>			
England & Wales		EU Directive 2002/91/EC	